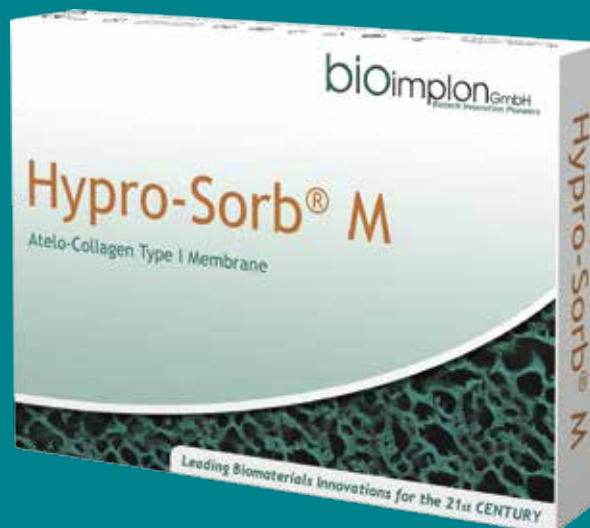

Hypro-Sorb® M Membranes

pure, crystalline Atelo-Collagen Type I Membranes



General information

Hypro Sorb® M membranes are biphasic, bilayer membranes of pure, crystalline Atelo-Collagen Type I of bovine origin. They come in three different sizes and two convenient thicknesses.

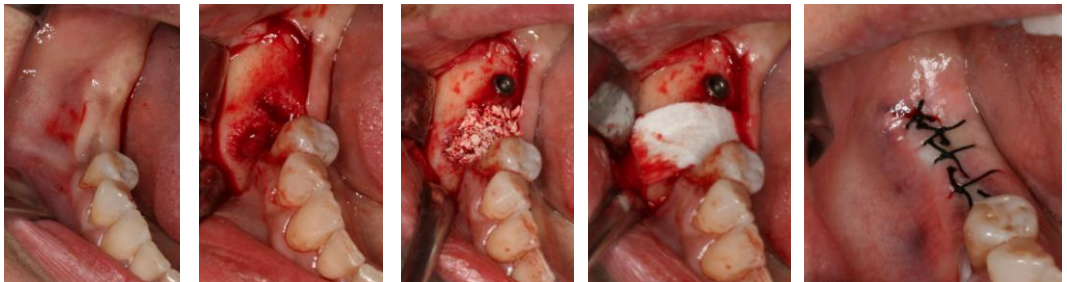
The membranes differ with regards to their handling: The 0.8 mm thick Hypro-Sorb M membrane is soft, whereas the 0.3 mm thick Hypro-Sorb M membrane is medium rigid. Due to the special processing of the collagen fibers it is not necessary to soak these membranes with saline or the patient's blood before application.

The membranes are the result of many years of experience and an intensive research collaboration between scientific teams of Hypro s.r.o. and Bioimplon GmbH.

Indications

Hypro-Sorb M membranes are used in dental surgery and implantology as well as for the restitution of bone defects. They are used mostly by periodontists, and are indicated for the following applications:

- Cystectomy
- Segmental growing of alveolar tissue
- Sinus lift
- Resection of upper root
- Filling of the alveolus after resections in prothetic surgical practice
- Periimplantitis
- Maxillofacial surgery
- Periodontal surgery
- Cleft lip and palate



Application of Hypro-Sorb® M and Hypro-Oss® – Images courtesy of Dr. Labazanov Ashab, Maxillofacial Surgeon, Moscow, Russia

Advantages of Hypro-Sorb M Membranes

- Pure, crystalline Atelo-Collagen Type I – free of immunogenic telopeptides
- Highest degree of tissue biocompatibility with excellent wound healing characteristics
- Quick adaptation to the defect due to its potent hydrophilic properties
- Reduced risk of dehiscence formation due to the texture and mild bacteriostatic effect of Atelo-Collagen Type I
- Can be attached with pins and suturing material
- Sufficiently long barrier function – resorption starts after four to six weeks
- Naturally resorbable within six months – a second operation for membrane removal is not necessary
- Long shelf life – safe and sterile for five years after production
- Unmistakable rough and smooth sides



Hypro-Sorb M, rough side



Hypro-Sorb M, smooth side

Properties of Hypro-Sorb M Membranes

The membrane consists of Atelo-Collagen Type I of bovine origin. Due to its manufacturing process it has a bilayer structure with one smooth and one rough side. The smooth side has a compact surface. It seals off the bone regeneration spot to prevent lateral ingrowth of fast growing gingival tissue. This side of the membrane faces the soft tissue.

The rough side of the membrane consists of loosely and porously arranged collagen fibers. It activates cell invasion. This side is turned towards the bone defect to improve the integration of bone cells and to accelerate blood clot formation.

The resorption process happens in two phases. During the first four to six weeks, Hypro-Sorb M stays intact. Only after that time does resorption start. It is completed within six months after the membrane has been adapted to the defect.

Important information

Composition:

Hypro-Sorb M membranes consist of 99,9% naturally pure, crystalline, resorbable, sterile, bovine Atelo-Collagen Type I (free of antigenic telopeptides).

Shelf life:

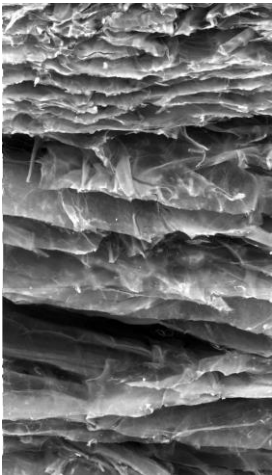
Five years from the date of production.

Storage conditions:

Hypro-Sorb® M must be stored at a temperature between -25°C and +50°C in a dry place. It needs to be protected from direct sunlight.

Postoperative care

In case of wound dehiscence with membrane exposure, the usual antimicrobial precautions are recommended. Removal of the membrane is not necessary. The resorption time may be accelerated by external influences such as saliva, etc. The properties of collagen may favour rapid healing of the wound dehiscence.



Hypro-Sorb® M:
Electron microscope
MAG 397

Hypro-Sorb® M Membranes Product Portfolio

Product name	Cat.no.	Membrane size	Description
Hypro-Sorb M soft	030	16 x 20 x 0,8 mm	Soft, biphasic Atelo-Collagen Type I membrane for guided bone and tissue regeneration (GBR / GTR)
	031	22 x 32 x 0,8 mm	
	032	32 x 42 x 0,8 mm	
Hypro-Sorb M medium-rigid	035	16 x 20 x 0,3 mm	Medium rigid, biphasic Atelo- Collagen Type I membrane for guided bone and tissue regeneration (GBR / GTR)
	036	22 x 32 x 0,3 mm	
	037	32 x 42 x 0,3 mm	

Hypro-Sorb® M is a Medical device class III, clinically tested and is certificated by notified body No. 1023, EC Certificate No. 090627QS/NB, EC Design-Examination Certificate No. 090628CN/NB.