



initial™ IQ ONE SQIN

Paintable
colour-and-form
ceramic system



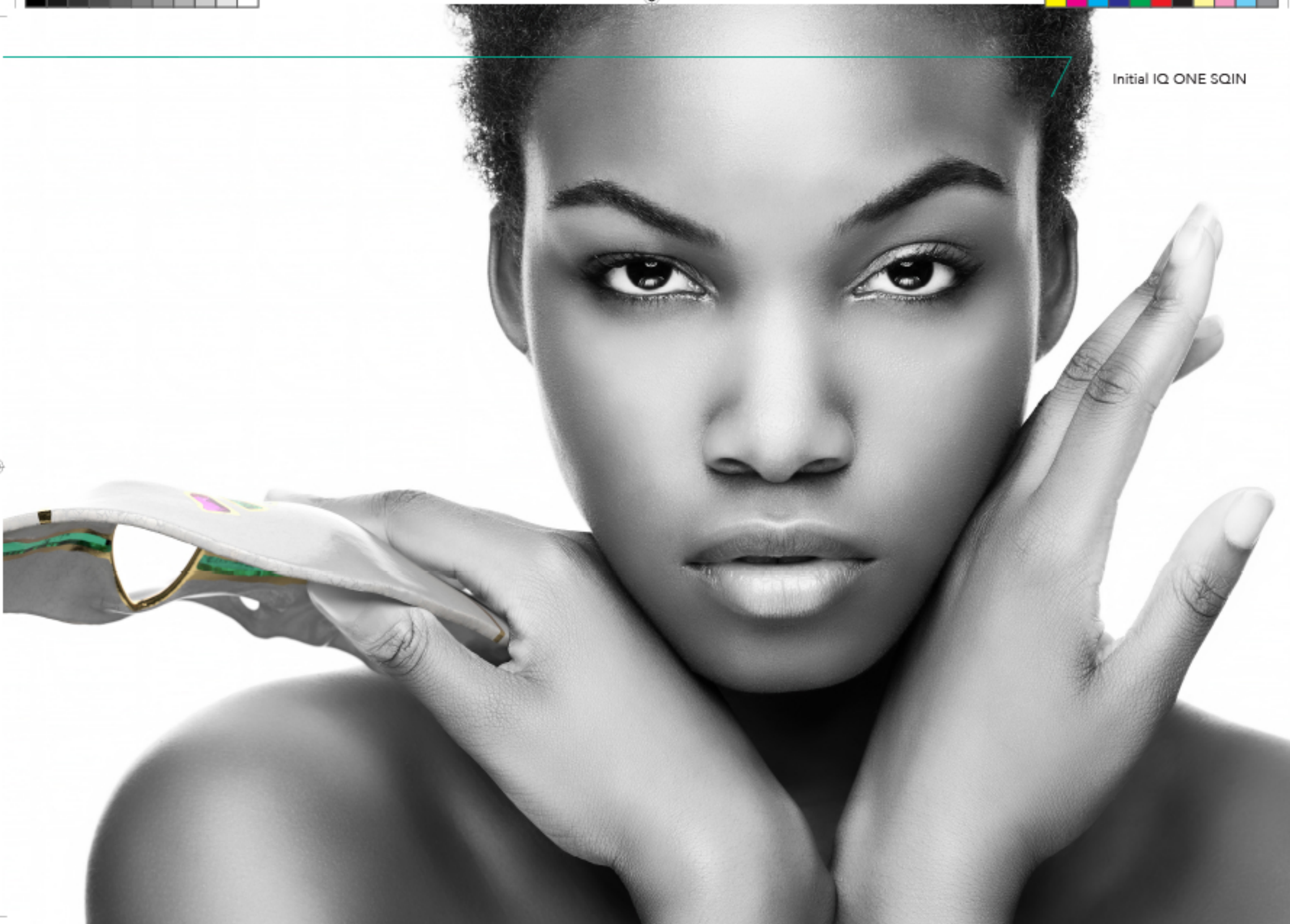


90 % of all teeth are ordered in a key shade...

For some time now, it has been possible to make posterior restorations from a single material such as lithium disilicate or zirconia, which are sufficiently aesthetic without laborious layering techniques. Monolithic work is increasing.

With **GC Initial IQ ONE SQIN** – the paintable colour-and-form ceramic system – aesthetically appealing restorations suitable for the anterior region, can be achieved in the same simple way. Based on the GC Initial «IQ philosophy», the system consists of different ceramic materials that are perfectly adapted to be used together assuring an efficient and aesthetically convincing finalization of monolithic and buccally reduced restorations.





Initial IQ ONE SQIN

Initial IQ Lustre Pastes ONE

The most versatile paintable ceramic for external staining as well as internal characterization of substructures. When used with SQIN, it also serves as the connection firing.

- ✓ Ready-to-use consistency
- ✓ Inherent fluorescence
- ✓ 3D colour deepness

Initial IQ SQIN

Completes the final contour of your restorations offering vitality, texture and natural gloss.

- ✓ Easy form and texture
- ✓ Self-glazing effect
- ✓ 3D surface structure



Initial Spectrum Stains

Fine powder stains for extra individual effects.

- ✓ Infinite colour nuances
- ✓ Can be mixed with Lustre Pastes ONE or SQIN

With GC Initial IQ ONE SQIN – the paintable colour-and-form ceramic system – you can quickly and easily achieve high aesthetic results, comparable to conventionally layered restorations but with a significant time gain.



How does it work? You choose...

Micro-layering technique (micro-buccally reduced monolithics)

GC Initial IQ Lustre Pastes ONE are used as a colour and individualization layer assuring a perfect connection firing before application of the SQIN powders. In the micro-layering technique, SQIN is easily applied in a layer thickness of 0.1 – 0.6 mm over the painted and fired Lustre Pastes ONE surface. Thanks to the refined mixture of feldspar-based glasses, a lifelike 3D-effect is created, resulting in colour deepness and lifelike translucency.

Mixed with the Form and Texture liquid, the SQIN powders become a highly compact and dense ceramic slurry. Their unique application and modelling properties will facilitate individual surface texturing with self-glazing properties after ceramic firing.

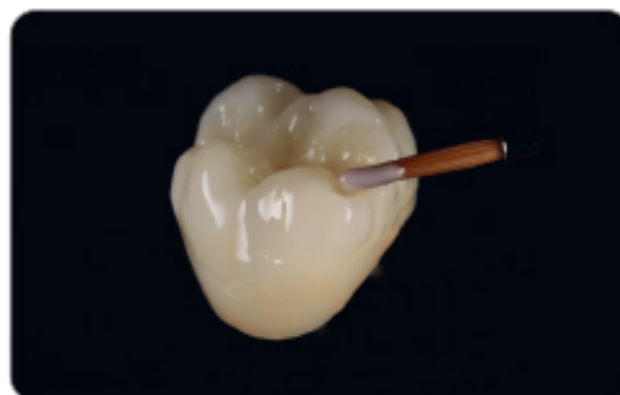
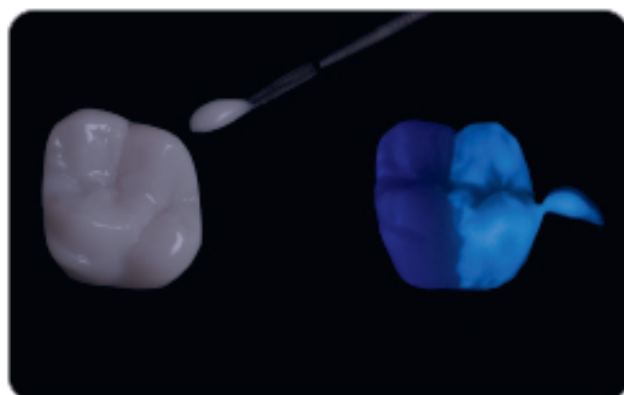


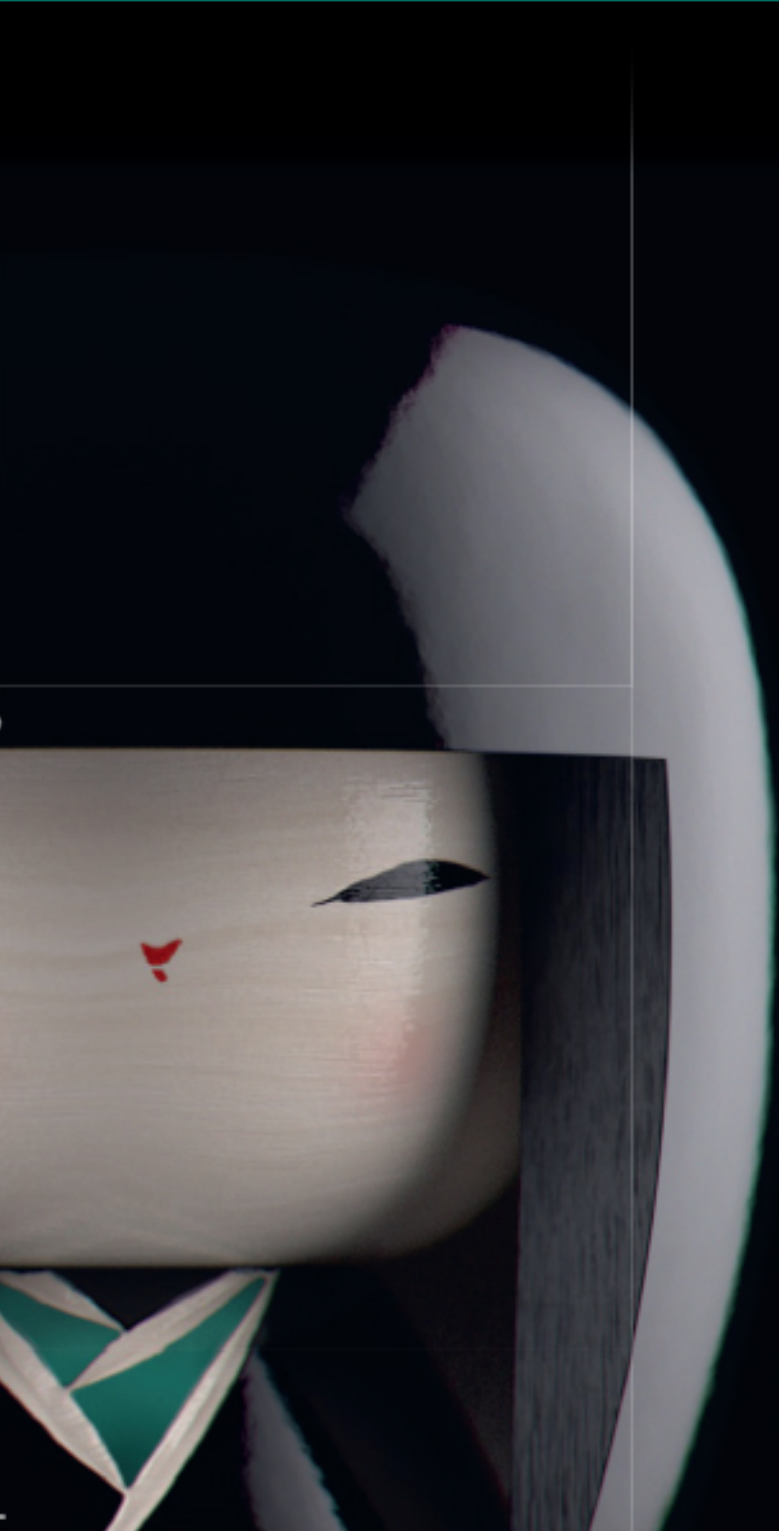
...what you paint is what you get!

Painting technique (monolithics)

Available in a ready-to-use consistency, the GC Initial IQ Lustre Pastes ONE feldspar-based 3D paint-on ceramic adds colour deepness and lifelike translucency with a very natural glaze to your monolithic restorations.

The pastes can be applied in a thicker layer guaranteeing unsurpassed vitality and a very natural glaze. With their inherent fluorescence, they are fine-tuned to boost the fluorescence of your monolithic restorations, especially when using the Lustre Pastes ONE Neutral FLUO (L-NFL).





Aesthetic

Beauty within



Natural fluorescence



Red and white aesthetics



Maximal aesthetics within a micro-layer



Easy and time-saving



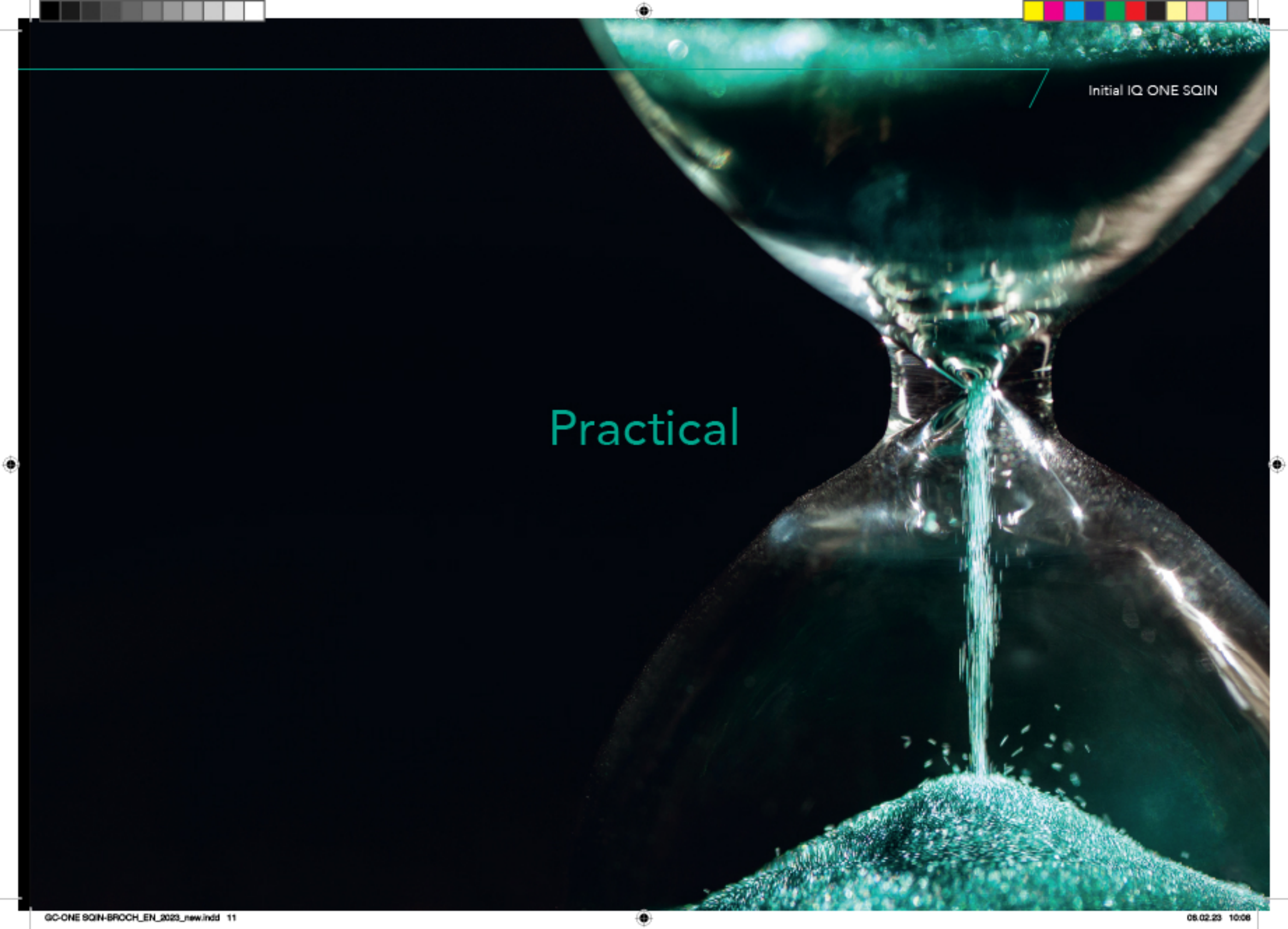
Create form and fine texture in the wet stage.
No changes after firing.



Initial IQ Lustre Pastes ONE also serve as connection firing.

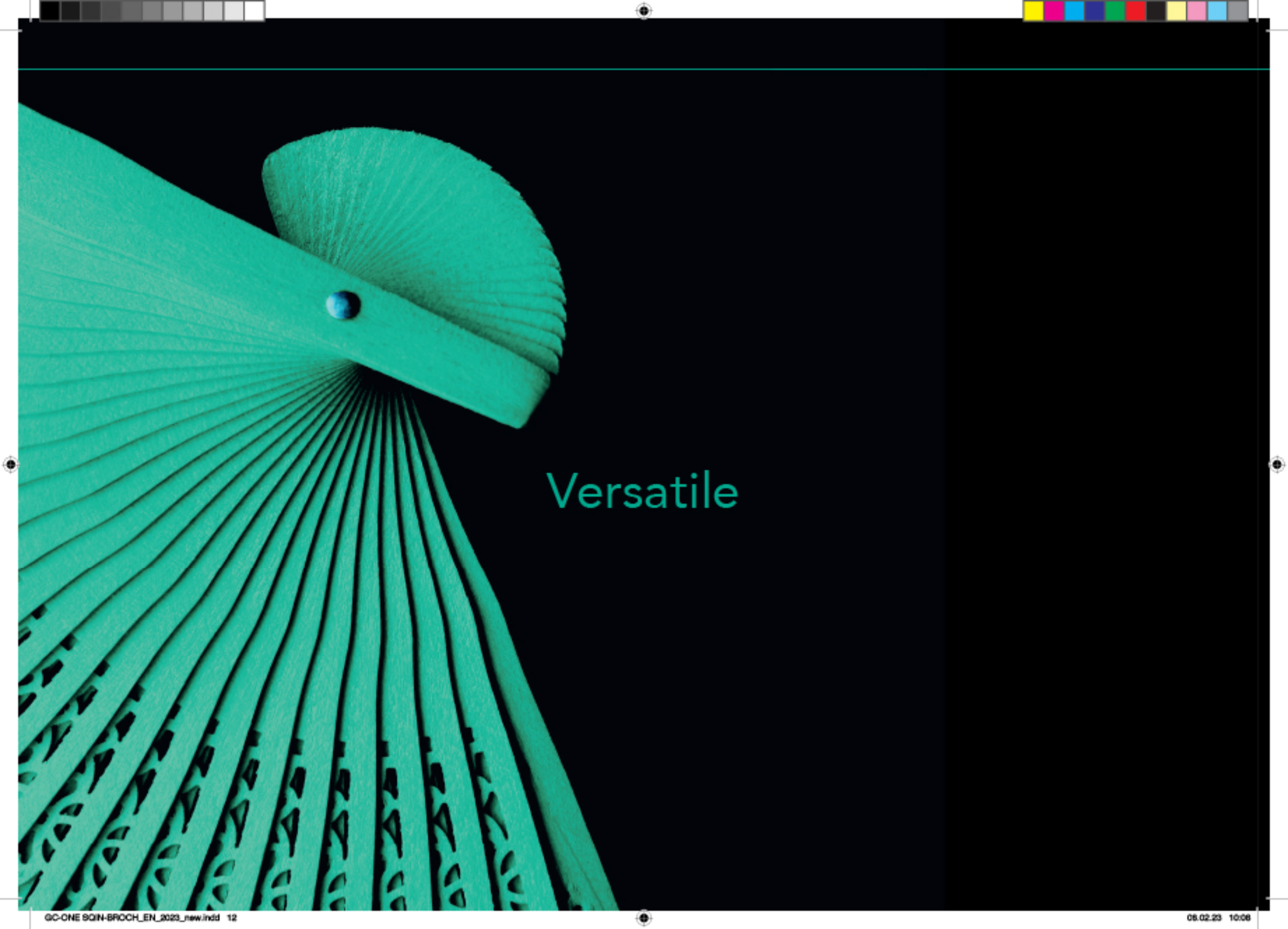


Self-glazing properties.
Get a beautiful glazed finish in one single firing.



Initial IQ ONE SQIN

Practical

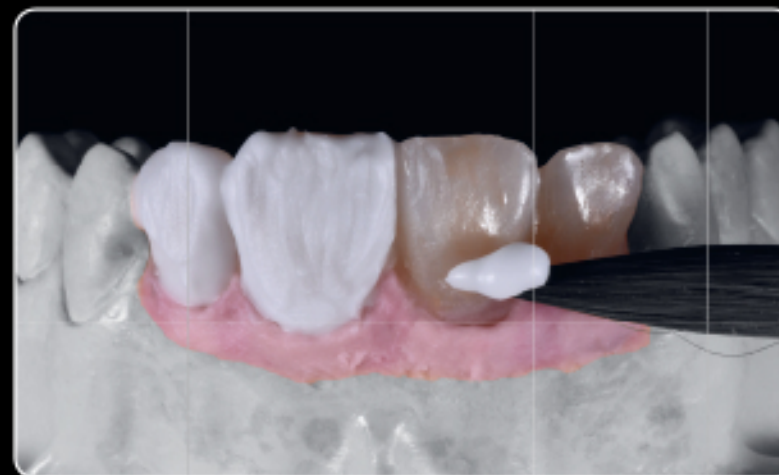


Versatile

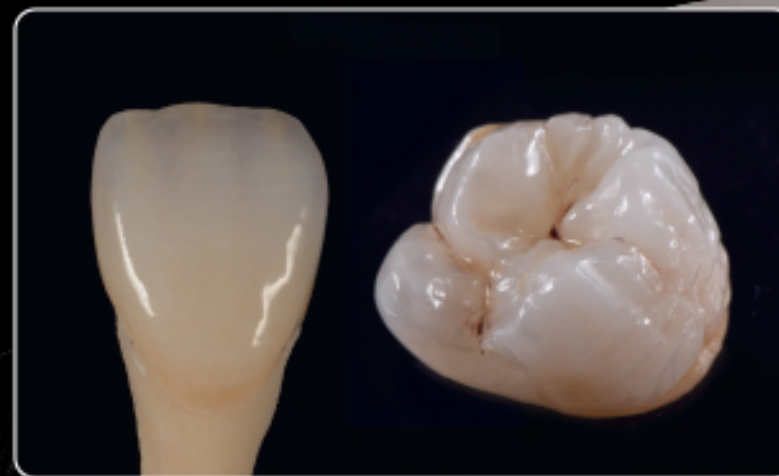
One system...



...for all your Zr and LDS full ceramic realizations



...for micro-layering as well as painting techniques



...for anterior and posterior restorations





GC Initial IQ ONE SQIN SYSTEM SET

- 10x SPS Stain (SPS-1 / 2 / 7 / 8 / 13 / 14 / 17 / 18 / 19 / 20), 3g
- 1x SPS Glaze Fluo (GL-FLUO), 10g
- 1x SPS Glaze Liquid, 25ml
- 2x IQ LP ONE Lustre Paste Neutral (L-N / L-NFL), 4g
- 4x IQ LP ONE Lustre Body Shade (L-A / B / C / D), 4g
- 6x IQ LP ONE Enamel Effect Shade (L-3 / 6 / 8 / 9 / 10 / OP), 4g
- 1x IQ LP ONE/NF Diluting Liquid, 8ml
- 1x IQ LP ONE/NF Refresh Liquid, 8ml
- 5x IQ SQIN Powder Dentin (Body A / B / C / D / BL-D), 10g
- 5x IQ SQIN Powder Enamel (E-57 / 58 / 59 / 60 / BL-E), 10g
- 1x IQ SQIN Powder Translucent Opal Booster (TO), 10g
- 3x IQ SQIN Powder GUM (light, dark, neutral), 10g
- 1x IQ SQIN Form & Texture Liquid, 25ml
- 1x IQ LP ONE Mixing Dish
- 1x IQ LP ONE Brush 00
- 1x IQ LP ONE Brush 2
- 1x IQ LP ONE Plastic Cover
- 1x IQ ONE SQIN Technical Manual
- 1x IQ LP ONE Colour Chart
- 1x SPS Colour Chart



ONE SQIN System Set to easily achieve high aesthetic results, comparable to conventionally layered restorations but with a significant time gain containing a selection of the major ceramic components.

GC Initial IQ SQIN SHADES SET

- 5x IQ SQIN Powder Dentin (Body A / B / C / D / BL-D), 10g
- 5x IQ SQIN Powder Enamel (E-57 / 58 / 59 / 60 / BL-E), 10g
- 1x IQ SQIN Powder Translucent Opal Booster (TO), 10g
- 3x IQ SQIN Powder GUM (light, dark, neutral), 10g
- 1x IQ SQIN Form & Texture Liquid, 25ml
- 1x IQ SQIN Technical Manual



GC Initial IQ Lustre Pastes ONE - V-SHADES SET

- 2x IQ LP ONE Lustre Paste Neutral (L-N / L-NFL), 4g
- 4x IQ LP ONE Lustre Body Shade (L-A / B / C / D), 4g
- 10x IQ LP ONE Enamel Effect Shade (L-1 / L-2 / L-3 / L-4 / L-5 / L-6 / L-7 / L-8 / L-9 / L-10), 4g
- 1x IQ LP ONE Enamel Effect Opal (L-OP), 4g
- 1x IQ LP ONE Enamel Effect Value (L-V), 4g
- 1x IQ LP ONE/NF Diluting Liquid, 8ml
- 1x IQ LP ONE/NF Refreshing Liquid, 8ml
- 1x IQ LP ONE Mixing dish
- 1x IQ LP ONE Brush 00
- 1x IQ LP ONE Brush 2
- 1x IQ LP ONE Colour Chart
- 1x IQ LP ONE Technical Manual

ONE SQIN technique – for all your zirconia and lithium disilicate restorations

- ✓ Create form and fine texture details in the wet stage – No changes after firing.
- ✓ Self-glazing properties – Get a beautiful glazed finish in one single firing.
- ✓ Optimal fluorescence level – Ensures the look of natural teeth under all light circumstances.
- ✓ Maximal aesthetics within a micro-layer.



Photo courtesy:

ZTM Michael Brüsch (Germany): p7 (middle and right image); p9 (middle right and bottom right image); p13 (left side of middle left, upper right and right side of bottom right image)

MDT Leonardo Cavallo (Italy): p7 (left image); p9 (upper left image)

MDT Patric Freudenthal (Sweden): p13 (right side of middle left image)

ZTM Stefan Roozen (Austria): p6 and p10; p13 (left side of bottom right image)



*initial*TM IQ ONE SQIN



GC EUROPE N.V.
Head Office
Researchpark,
Haasrode-Leuven 1240
Interleuvenlaan 33, B-3001 Leuven
Tel. +32 16 74 10 00
Fax.+32 16 40 48 32
info.gce@gc.dental
<http://europe.gc.dental>

GC UNITED KINGDOM Ltd.
Coopers Court Newport Pagnell
Buckinghamshire
MK16 8JS
United Kingdom
Tel. +44 1908 218 999
Fax.+44 1908 218 900
info.uk@gc.dental
<http://europe.gc.dental/en-GB>

x L LF EN 7 80 05/21