



*initial*

LiSi

from GC

Master your  
lithium disilicate  
challenges

**GC**



# Master your lithium disilicate challenges

With Initial LiSi, GC offers a highly aesthetic feldspar veneering ceramic adapted to the light-dynamics of lithium disilicate frameworks. With this type of frameworks gaining popularity, GC now offers a solution for highly aesthetic and durable restorations for long-term patient satisfaction.

GC Initial LiSi is characterised by a precisely adapted coefficient of thermal expansion (CTE), low firing temperatures and maximum stability even after multiple firings. But Initial LiSi will mainly impress you with its excellent aesthetics on lithium disilicate frameworks, particularly in terms of their optical dynamics.

The new special veneering ceramic can be used both in the individual layering and in the cut-back technique following the proven Initial ceramic concept – One shade system – One layering technique.

If you want to go even further, full anatomical frameworks can be enhanced by staining using the GC Initial Lustre Pastes NF.



## All benefits at a glance

High firing stability, even after multiple firings



Left tooth: Initial LiSi

Right tooth: Standard lithium disilicate veneering ceramic

with no loss in value



with retention of internal characterisations

Feldspar based ceramic with optimised crystal structure resulting in more natural optical effects offering superior natural aesthetics

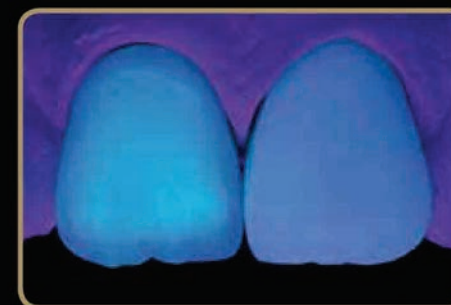


Specially designed and adapted to the light-dynamics of lithium disilicate frameworks



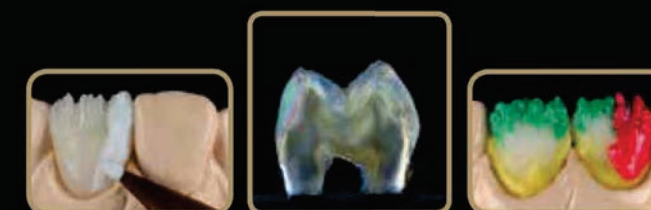
Left tooth: Initial LiSi

Right tooth: Standard lithium disilicate veneering ceramic



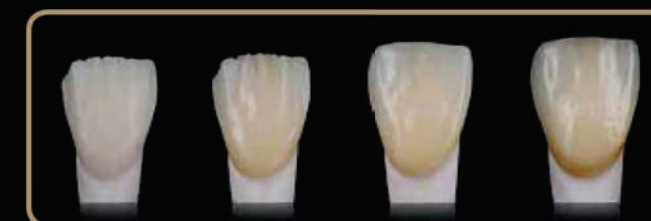
A variety of special powders like Fluo Dentins (FD) offering a natural fluorescence whilst keeping the right value balance and the INsides (IN) which are combining chroma intensity and fluorescence in the same powder.

Comprehensive shade and layering system following the proven Initial bio-esthetical shade concept



Quick, aesthetic and economical results

Whether you go for cut-back layering, individual layering or monolithic paint-on techniques, GC Initial LiSi systematically offers the right tools to do this in no-time.



Incisal powders like Enamel Opal (EOP), Translucent Modifiers (TM) or Clear Fluorescent (CL-F) are adapted to diffuse the surrounding light, offering a natural appearance.

Low range firing temperature and exactly cross-matched coefficients of thermal expansion



- Modular approach: Basic & Advanced system set composition

- Perfectly compatible with the IQ Lustre Pastes NF offering an internal/external paint-on colour & gloss solution



Master all your lithium disilicate challenges with Initial LiSi from GC



# GC Initial LiSi - The perfect choice to master all your challenges

## GC Initial LiSi Basic Set



### Set Composition:

GC Initial LiSi, Dentin, D-A1/DA-2/DA-3/DB-1/D-B2/D-C2, 20g  
 GC Initial LiSi, Enamel, E-57/E-58/E-59/E-60, 20g  
 GC Initial LiSi, Clear Fluorescence, CL-F, 20g  
 GC Initial LiSi, Translucent, TN/TO, 20g  
 GC Initial LiSi, Bleach Dentin, BLD-2, 20g  
 GC Initial LiSi, Bleach Enamel, BL-E, 20g  
 GC Initial LiSi, Translucent Modifier, TM-01/TM-05, 20g  
 GC Initial AL,Zr,Ti / INvivo-INsitu Glaze, GL, 10g, LiSi  
 GC Initial AL,Zr,Ti / INvivo-INsitu Glaze Liquid, 25ml, LiSi  
 GC Initial LiSi, Modelling Liquid, 50ml  
 GC Initial LiSi Shade Chart  
 GC Initial LiSi Technical Manual

## GC Initial LiSi Advanced Set



### Set Composition:

GC Initial LiSi, Enamel Occlusal, EO-15, 20g  
 GC Initial LiSi, Fluo-Dentin, FD-91/FD-92/FD-93, 20g  
 GC Initial LiSi, Enamel Opal, EOP-2/EOP-3/EOP-4, 20g  
 GC Initial LiSi, Cervical Translucent, CT-22/CT-23/CT-24/CT-25, 20g  
 GC Initial LiSi, INside, IN-41/IN-42/IN-43/IN-44/IN-45/IN-46/  
 IN-47/IN-48/IN-49/IN-50/IN-51, 20g  
 GC Initial LiSi, Modelling Liquid, 50ml



## GC Initial Lustre Pastes NF Set V-shades

- 5 Basic colours to achieve a V-Shade restoration in the easiest way.
- 9 Advanced colours to open up your artistic side and paint white spots, decalcifications, hair lines and crack lines.

Pictures with courtesy of :

Michael Brusch, Germany | Joshua Polansky, USA | Djemal Ibraimi, Switzerland | Simone Maffei, Italy | Javier Tapia, Spain

### GC EUROPE N.V.

Head Office  
 Researchpark  
 Haasrode-Leuven 1240  
 Interleuvenlaan 33  
 B-3001 Leuven  
 Tel. +32.16.74.10.00  
 Fax. +32.16.40.48.32  
 info@gceurope.com  
 http://www.gceurope.com

### GC UNITED KINGDOM Ltd.

12-15, Coopers Court  
 Newport Pagnell  
 UK-Bucks. MK16 8JS  
 Tel. +44.1908.218.999  
 Fax. +44.1908.218.900  
 info@uk.gceurope.com  
 http://uk.gceurope.com

