

# SmartLite® Pro

Modular LED Curing Light

# Light, where you need it.



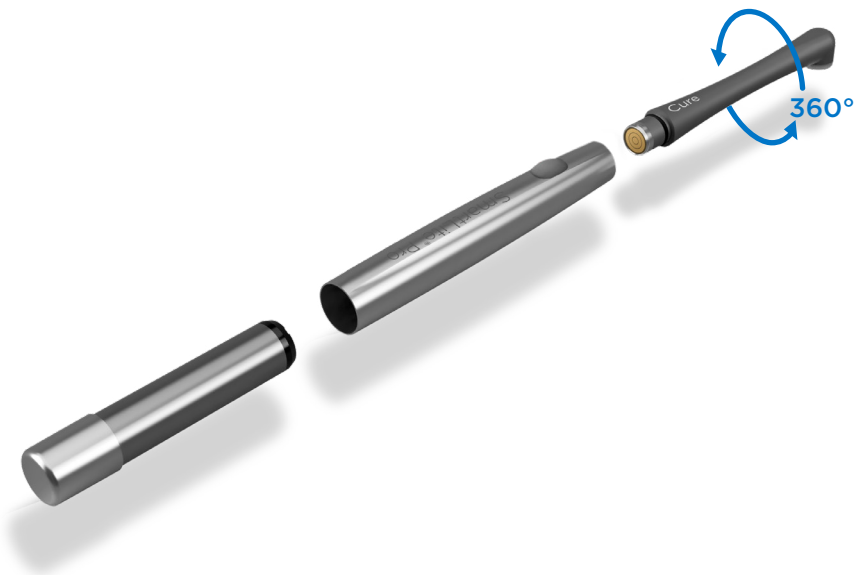
# More than just a curing light

We weren't satisfied with creating one of the most advanced curing lights ever. It had to be one of the best-designed as well. The SmartLite® Pro is a multi-functional modular device in a remarkable, all-metal housing.



# Modular Concept

The SmartLite® Pro features a modular design with interchangeable tips for a variety of clinical indications. These quick connect, 360-degree rotational tips are easy to change. The forward-thinking design also allows for the addition of new tips as technology advances in the future.



Curing  
Light



Transillumination



SmartLite Pro  
EndoActivator™



# 50%

of all dental office revenue depends on the successful use of a curing light.<sup>1</sup>

1. American Dental Association (2007) 2005-06 Survey of Dental Services Rendered 1-181



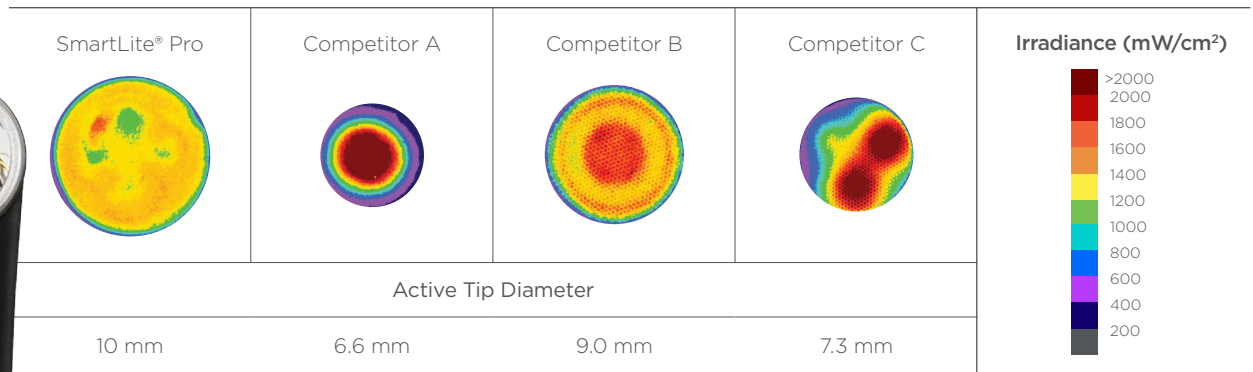


# Collimated, uniform light beam

Optimized four LED design provides a homogeneous light distribution over the entire curing area. SmartLite® Pro delivers an average irradiance of 1250 mW/cm<sup>2</sup>.



BEAM PROFILES OF FOUR LIGHTS SHOWING THE DISTRIBUTION OF LIGHT EMITTED ACROSS THE LIGHT TIPS<sup>1</sup>



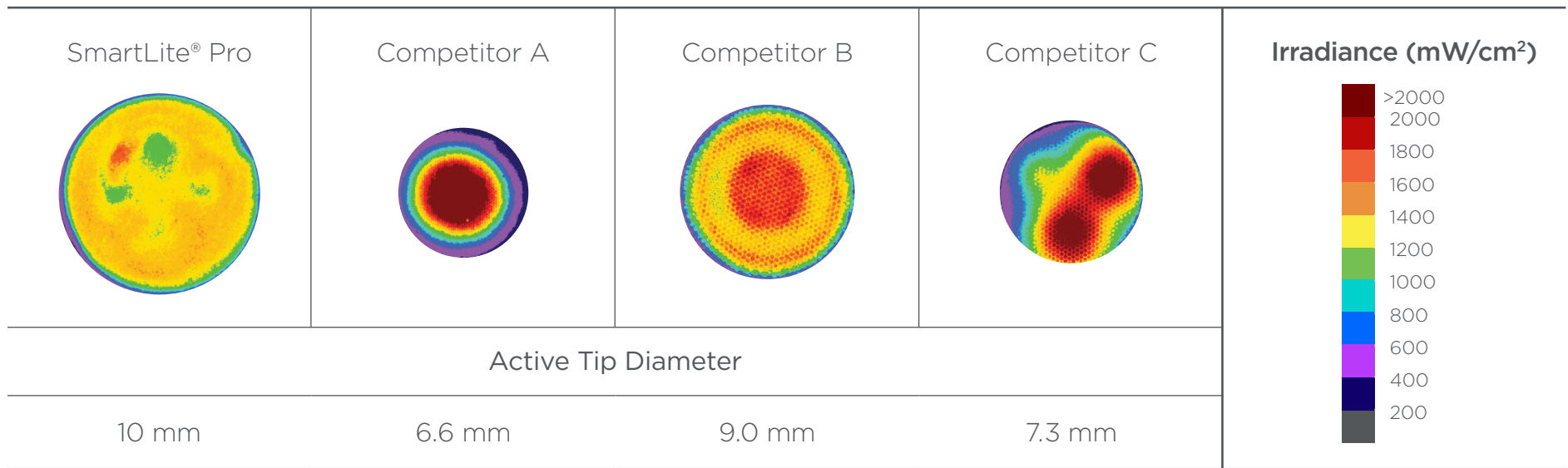
ALL IMAGES TAKEN AT 0 MM DISTANCE FROM THE TIP UNDER IDENTICAL CONDITIONS SHOWING THE UNFILTERED IRRADIANCE DISTRIBUTION OF ALL WAVELENGTHS OF BLUE AND VIOLET LIGHT (350-550 NM).

<sup>1</sup> R. Price (2019). Unpublished commissioned study, data on file. For more information, contact Consumables-Data-Requests@dentsplysirona.com





**BEAM PROFILES OF FOUR LIGHTS SHOWING THE DISTRIBUTION OF LIGHT EMITTED ACROSS THE LIGHT TIPS<sup>1</sup>**



ALL IMAGES TAKEN AT 0 MM DISTANCE FROM THE TIP UNDER IDENTICAL CONDITIONS SHOWING THE UNFILTERED IRRADIANCE DISTRIBUTION OF ALL WAVELENGTHS OF BLUE AND VIOLET LIGHT (350-550 NM).

<sup>1</sup> R. Price (2019). Unpublished commissioned study, data on file. For more information, contact Consumables-Data-Requests@dentsplysirona.com



## Light Curing - Guidelines for Practitioners.<sup>1</sup>

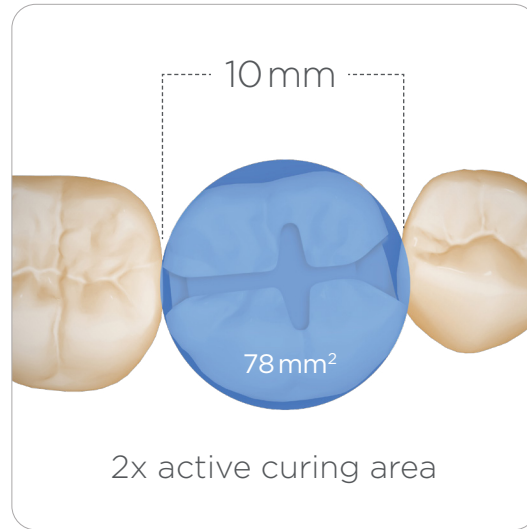
Be cautious when using high (above 1,500 to 2,000 mW/cm<sup>2</sup>) output LCUs that advocate very short (e.g., 1 to 5 seconds) exposure times. When used for such short times, it is critical that the light tip is stabilized over the resin during exposure. Although some resin composites are matched to specific high output curing lights, high output LCUs may not adequately cure all of today's resin-composites to the anticipated depth when used for short exposure times.

Source: Light Curing Guidelines for Practitioners: A Consensus Statement from the 2014 Symposium on Light Curing in Dentistry, Dalhousie University, Halifax, Canada

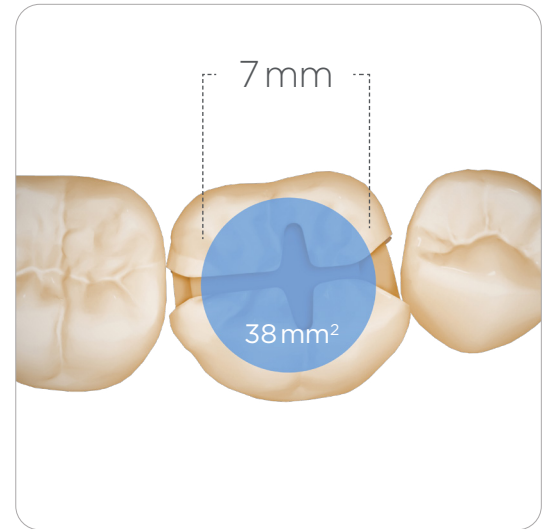


# Reliable clinical outcomes

Large 10mm active curing diameter covers bigger restorations helping to avoid multiple overlapping curing cycles for more safety.



SmartLite® Pro

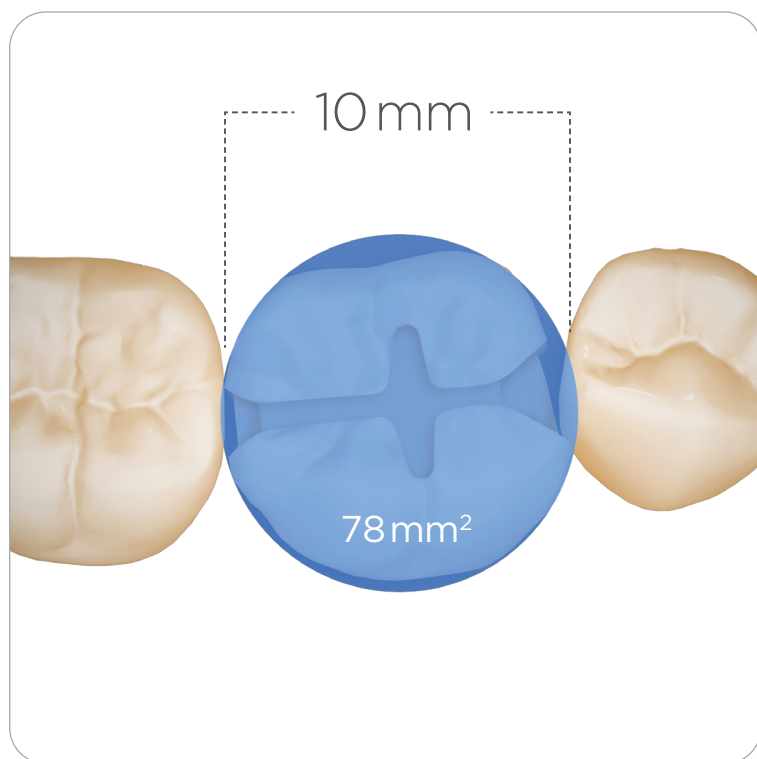


Competitor

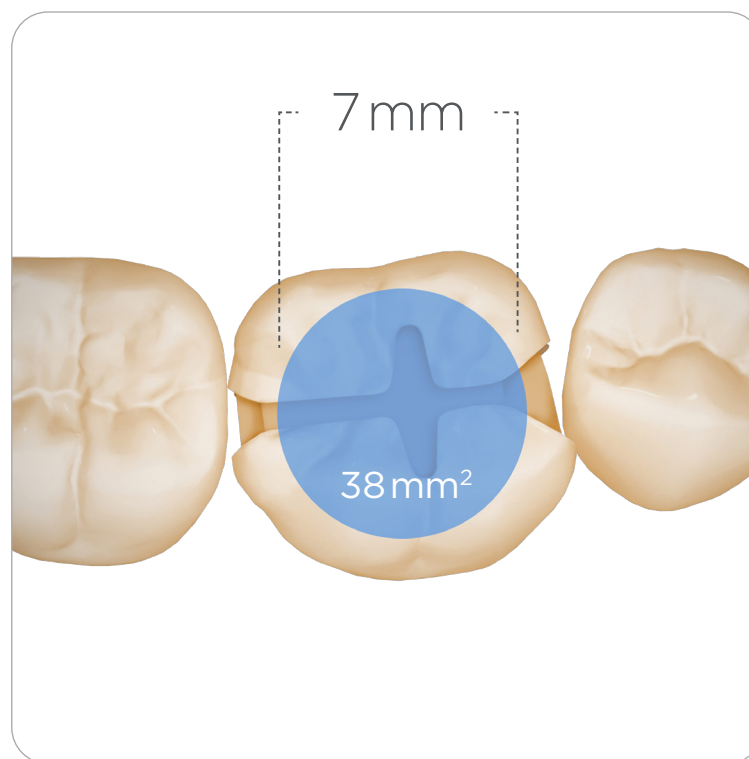




A 10mm active curing diameter covers more than 2x the curing area of a 7mm diameter (78mm<sup>2</sup> vs. 38mm<sup>2</sup>)



SmartLite® Pro



Competitor



# Reliable clinical outcomes

Low-profile design and clinically relevant probe length to adequately reach posterior restorations.



SmartLite® Pro



Competitor





# Change the angle, change the cure.



SmartLite® Pro



Competitor



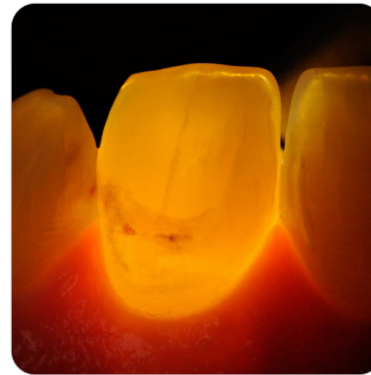
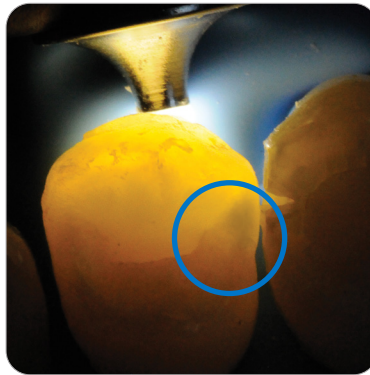
# Transillumination

The Transillumination Tip is a diagnostic aid that helps visualize interproximal caries, evaluate cracked teeth and illuminate endodontic access. Its sophisticated design includes a 1 mm focused light output with two different settings (anterior and posterior).

Visual Inspection

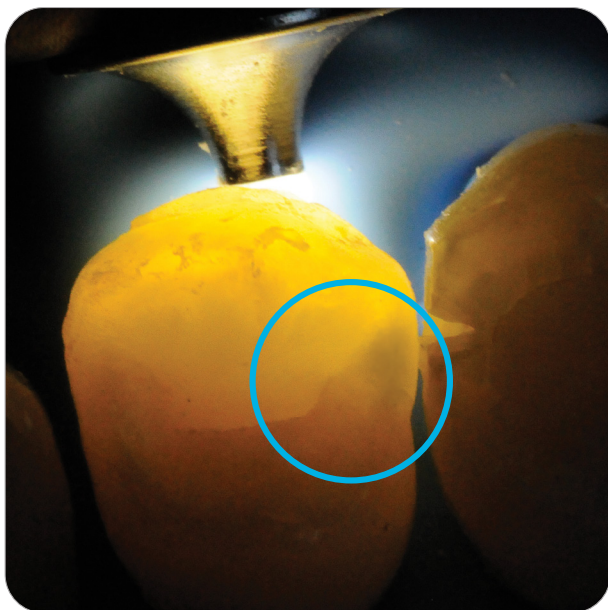


Transillumination

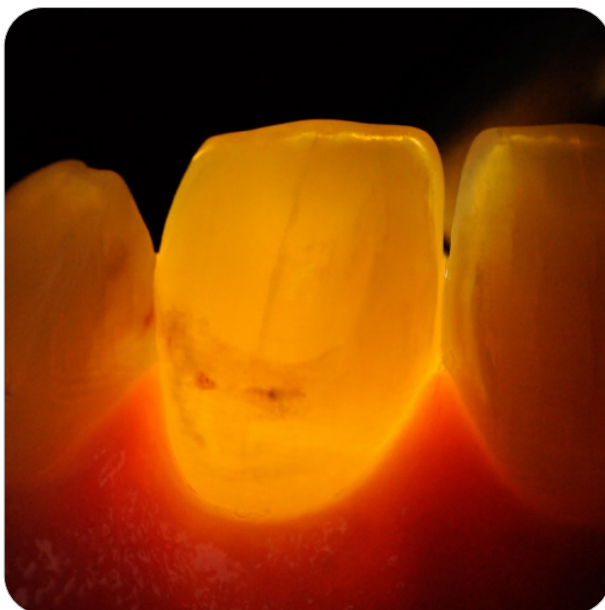




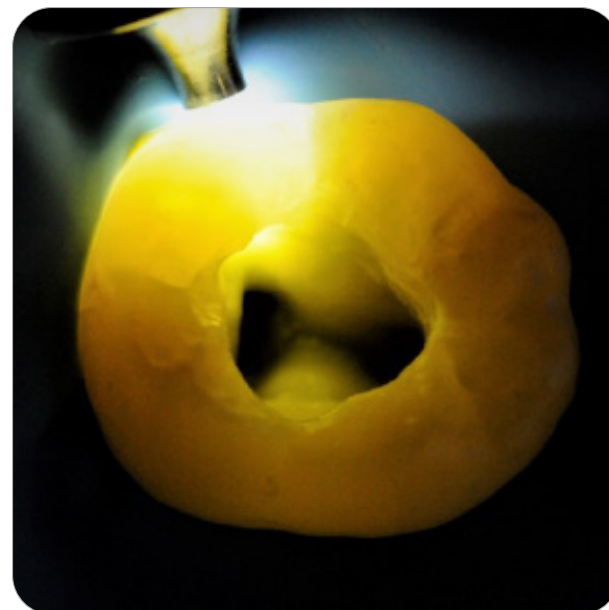
## Transillumination is an aid for:



Anterior and posterior interproximal caries and occlusal caries diagnosis



Evaluation of cracked teeth



Illumination of endodontic access and root canal orifices during endodontic treatment

# SmartLite Pro EndoActivator™

**More effective cleaning in just 90 seconds.<sup>1</sup>**

Designed for multi-directional movement, the SmartLite Pro EndoActivator™ system uses elliptical motion and increased energy for effective irrigant activation.



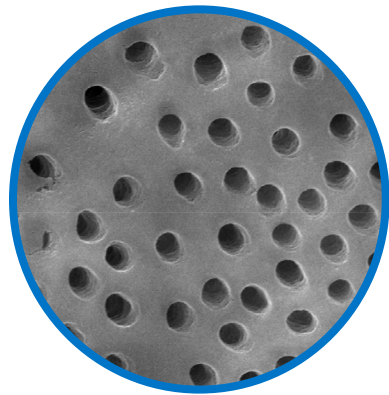
<sup>1</sup>. Internal data on file. For more information contact [Consumables-Data-Requests@dentsplysirona.com](mailto:Consumables-Data-Requests@dentsplysirona.com)



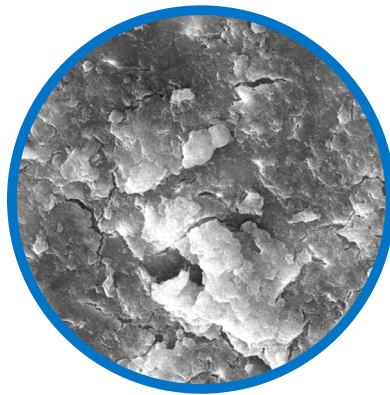


# Passive soaks aren't enough.

Activating irrigant solution produces a surface with more opened dentinal tubules, providing better obturation of lateral and accessory canals.<sup>1</sup>



Treated with SmartLite Pro  
EndoActivator™



Untreated

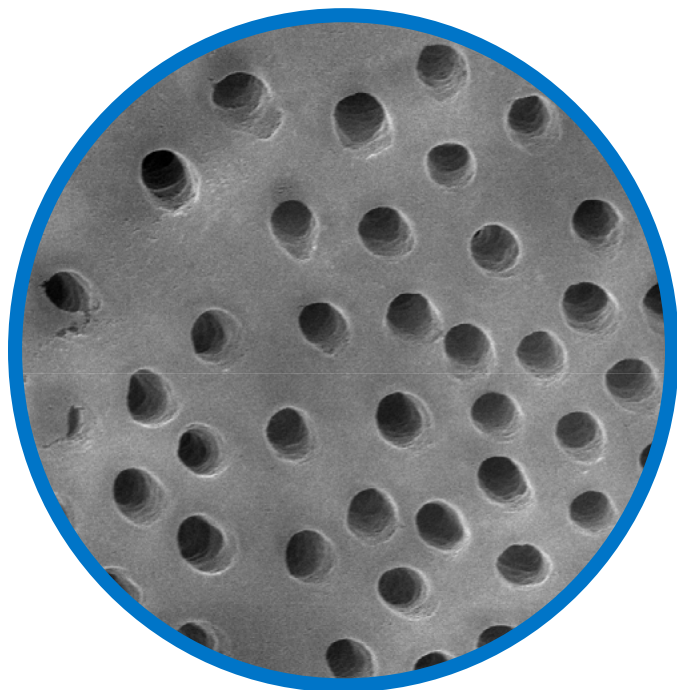


<sup>1</sup>. Kanter V, Weldon E, Nair U, et al. A quantitative and qualitative analysis of ultrasonic versus sonic endodontic systems on canal cleanliness and obturation. Oral Surg Oral Med Oral Pathol Oral Radiol Endod. 2011;112(6):809-813. doi:10.1016/j.tripleo.2011.06.002

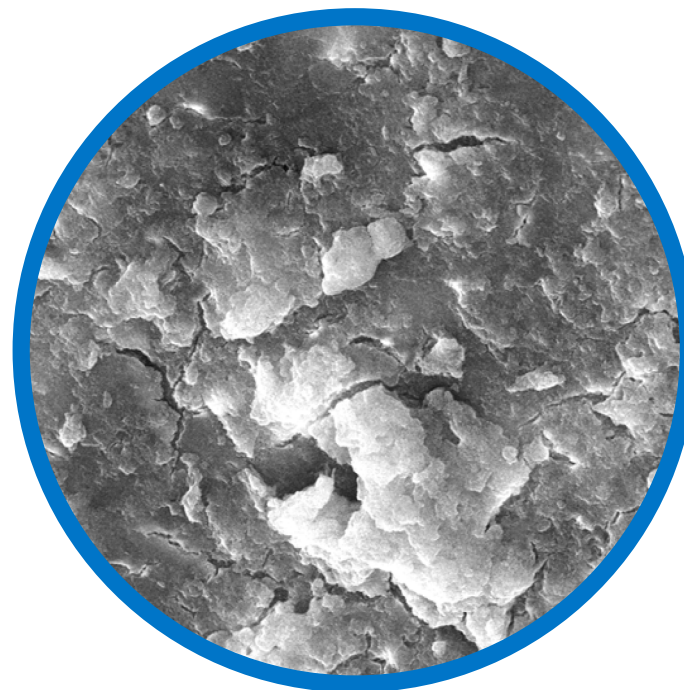




# 150 times higher bacteria reduction.<sup>1</sup>



Treated with SmartLite Pro  
EndoActivator™



Untreated

<sup>1</sup>. Internal data on file. For more information contact [Consumables-Data-Requests@dentsplysirona.com](mailto:Consumables-Data-Requests@dentsplysirona.com)



## Multi-Functional Charging Base

The SmartLite® Pro curing light comes with a modern-design charging base with a built-in radiometer and room for extra tips. The intuitive battery management system includes **two quick connect batteries** for constant availability. The latest generation lithium iron phosphate batteries ensure a full day of clinical operation with only one charge.



Radiometer



Modular Concept

Curing Performance

Transillumination

SmartLite Pro  
EndoActivator™

Multi-Functional  
Charging Base

Resources



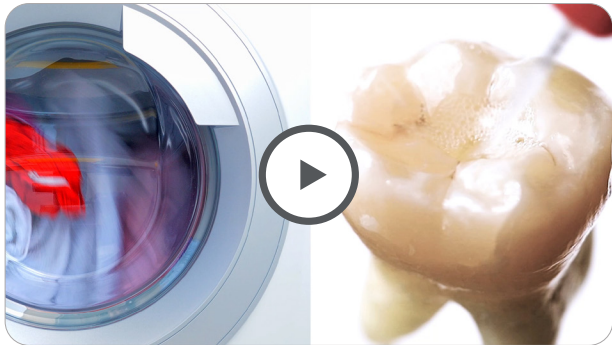
KEYS TO LIGHT CURING: BEAM PROFILE



KEYS TO LIGHT CURING: LIGHT COVERAGE



KEYS TO LIGHT CURING: LIGHT OUTPUT



SMARTLITE PRO ENDOACTIVATOR™ SYSTEM  
INTRODUCTORY VIDEO



SMARTLITE PRO  
ENDOACTIVATOR™ SYSTEM  
BROCHURE



The modular concept is amazing, it's like a swiss-knife tool!

Paolone, Gaetano - Italy

The most ergonomic, effective and cleanable light-curing unit I ever had.

Prof. Nicola Scotti - Italy

Optimal balance of performance & shape!

佐藤 貴彦 (Sato, Takahiko) - Japan

Brilliantly designed modular light with excellent curing capability and additional transillumination capacity that sets it above all other lights in the market.

Dr. A. Babul - Canada

Very satisfied with its performance.

Lau, Lawrence - Australia

A modern product that can change the future of light curing in the dental practise.

Vetter, Jancee Anton - Germany

Fantastic, well-designed light with numerous features the clinician will love.

Doug Lambert, DDS - USA

The Smartlite Pro has excellent feel in your hand, cures dental materials exceptionally well, and has a battery that lasts well beyond anything else I've ever used.

Steven J Saccoccio, DMD - USA

Very powerful, easy to handle, very nice design with a solid metal casing.

Dr. Markus Lewitzki - Germany





# Ordering Information

## 644400 SmartLite® Pro Introductory Kit

1 x Handpiece, 1 x Cure Tip, 1 x Transillumination Tip,  
2 x Batteries, 1 x Charging Base, & Accessories

## 644409 SmartLite® Pro Basic Kit

1 x Handpiece, 1 x Cure Tip, 2 x Batteries,  
1 x Charging Base, & Accessories

## 644431 SmartLite Pro EndoActivator™ Complete Kit

1 x Handpiece, 1 x EndoActivator Attachment,  
2 x Batteries, 1 x Charging Base & Accessories

## 644432 SmartLite Pro EndoActivator™ Refill Kit

1 x EndoActivator Attachment, 100 x EA Barrier Sleeves,  
25 x EA Tips Small, 25 x EA Tips Medium,  
25 x EA Tips Medium Long

## Refills

644401 SmartLite® Pro Battery

644402 SmartLite® Pro Barrier Sleeves (100)

644403 SmartLite® Pro Eye Protection Shields (5)

644405 SmartLite® Pro Transillumination Tip Refill

644406 SmartLite® Pro PolyCure Tip Refill

644407 SmartLite® Pro Cure Tip Refill

644434 SmartLite Pro EndoActivator™ Barrier Sleeves (100)

644435 SmartLite Pro EndoActivator™ Tips Small (25)

644436 SmartLite Pro EndoActivator™ Tips Medium (25)

644437 SmartLite Pro EndoActivator™ Tips Medium Long (25)

# CLEANER CANALS FASTER? CHALLENGE ACCEPTED.



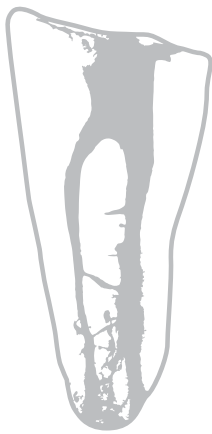
Shaping • **Cleaning** • Obturation



# SHAKE UP YOUR IDEA OF CLEAN

**#1**

Clinicians' concern when performing endo treatment is **cleaning the canal.**<sup>1</sup>



because **35%**

or more of **canal surfaces are left untouched** after instrumentation. Yet the long-term success of an endodontic procedure depends on a clean canal.<sup>2</sup>



And a passive bleach soak takes up to **40 minutes** to effectively eliminate bacteria.<sup>3</sup>



But the median irrigation time is **2.5 minutes,**<sup>4</sup> leaving bacteria that can compromise treatment.<sup>5</sup>



## Advanced cleaning tools are the difference

### Irrigation Needle

is designed to provide safe yet efficient distribution of the irrigation solution close to the apex.



### SmartLite Pro EndoActivator™

promotes deep cleaning and disinfection to facilitate three-dimensional obturation and long-term success.



<sup>1</sup>. 2021 Dental Omnibus, Key Group Market Research. <sup>2</sup>. Peters, O.A., K. Schonenberger, and A. Laib, "Effects of Four Ni-Ti Preparation Techniques on Root Canal Geometry Assessed by MicroComputed Tomography" International Endodontic Journal Int Endod J 34.3 (2001): 221-30. <sup>3</sup>. Retamozo B, Shahbahng S, Johnson N, Apreccio RM, Torabinejad M. Minimum contact time and concentration of sodium hypochlorite required to eliminate Enterococcus faecalis. J Endod. 2010 Mar;36(3):520-3. doi:10.1016/j.joen.2009.12.005. PMID: 20171375. <sup>4</sup>. DIG Insights. Based on GPR typical irrigation protocols that are performed after shaping/instrumentation but before obturation. N=201. <sup>5</sup>. Internal data on file. For more information contact Consumables-Data-Requests@dentsplysirona.com

# IRRIGATION

## CHALLENGE: DELIVER IRRIGATION CLOSE TO THE APEX



### Balanced irrigation volume

Innovative side-vent design aims solution at dentinal walls rather than forcing fluid beyond the apex, while removing debris, smear layer and biofilm.



### Follows natural canal shape

Soft and flexible polymer follows root canal anatomy for efficient cleaning until the apex. Atraumatic design protects hard tissue.



### Leak-free efficiency

Simple Luer Lock connection



"Irrigation feels like never before! The soft and flexible polypropylene Irrigation Needle follows the canal anatomy effortlessly until the apical area and supports safe debridement. The needle makes irrigation simple, effective and even more successful."



Dr. Krishna Vyas  
India



CLOSE X

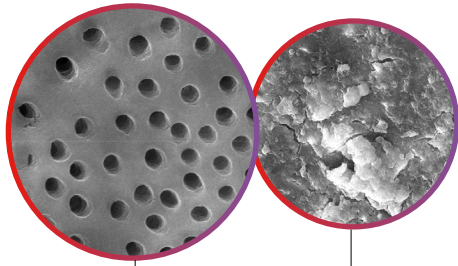
# ACTIVATION

## CHALLENGE: PROMOTE 3D CLEANING AND COMPLETE ENDODONTICS



### Passive soaks aren't enough

Activating irrigant solution produces a surface with more opened dentinal tubules, providing better obturation of lateral and accessory canals.<sup>6</sup>



Treated with SmartLite Pro EndoActivator™

Untreated



### 150 times higher bacteria reduction<sup>7</sup>

Following the protocol\* SmartLite Pro EndoActivator™ provides significantly higher bacteria reduction versus one-minute bleach soak manually activated with an irrigation needle.



### More effective cleaning in just 90 seconds<sup>7</sup>

Designed for multi-directional movement, the SmartLite Pro EndoActivator™ uses elliptical motion and increased energy for effective irrigant activation.

Use this QR code to access the scientific manual/resource page of SmartLite Pro EndoActivator



"SmartLite Pro EndoActivator™ moves fluids much more efficiently. When you're looking through a microscope, you can literally see the difference in the cleanliness of the fluids that are coming out of there. It's just loaded with debris. So if you just think of this as turning on your washing machine, it does so much more in 30 seconds than you can do just sitting there soaking."



Michael W. Nimmich  
DMD, MS

**Activating irrigants produces a surface with more opened dentinal tubules, allowing for better obturation of lateral and accessory canals.<sup>6</sup>**

## AND MEET THE FAMILY.

The SmartLite® Pro modular system supports a variety of clinical procedures.

The EndoActivator™ attachment boosts your cleaning efficacy vs. bleach soak

The Curing light tip's state of the art optics provide leading quality of cure for reliable outcomes

The Transillumination tip reveals endodontic access points, cracks and interproximal caries



\* 60 seconds combined with manually activated irrigation for 30 seconds

<sup>6</sup> Kärter V, Weidon E, Nair U, et al. A quantitative and qualitative analysis of ultrasonic versus sonic endodontic systems on canal cleanliness and obturation. Oral Surg Oral Med Oral Pathol Oral Radiol Endod. 2011;112(6):809-813. doi:10.1016/j.tripleo.2011.06.002 <sup>7</sup> Internal data on file. For more information contact Consumables-Data-Requests@dentistry.sirona.com



CLOSE X

## SmartLite Pro EndoActivator™ Technical Specifications

- More safety in each procedure: flexible, non-cutting medical grade plastic tips provide no ledging, transportation, enlargement, or shaping of the canal
- Two-speed sonic energy for your endodontic procedures (18,000 cpm + 3,000 cpm)
- Modern, multifunctional charging base: charging port and additional storage
- Intuitive battery management: quick charge mode, easy and quick connect battery exchange with audible feedback, permanent/constant availability due to easy-to-handle back-up battery
- 360° rotatable attachment for excellent clinical access convenience and ergonomics
- Lightweight, well-balanced
- Audible tones and tactile/vibration alert
- Battery status indicator in activation button
- All-metal handpiece housing for improved durability/ made of medical grade stainless steel and aluminum

### SmartLite Pro EndoActivator™ Endodontic Activation System Complete Kit



#### 644431

Handpiece • EndoActivator™ Attachment • 2 Batteries  
 • Charging Base • Accessories Box (Power Connector, AU, EU, US, UK plug adapters, USB Cable) • IFU  
 • Technique Card • SLP-EA Barrier Sleeves 100/pack (644434) • EA Tips Small 25/pack (644435) • EA Tips Medium 25/pack (644436) • EA Tips Medium Long 25/pack (644437)

### SmartLite Pro EndoActivator™ Endodontic Activation System

<b>644432</b>	EndoActivator™ Attachment • IFU • Technique Card • SLP-EA Barrier Sleeves 100/pack (644434) • EA Tips Small 25/pack (644435) • EA Tips Medium 25/pack (644436) • EA Tips Medium Long 25/pack (644437)
<b>644434</b>	SmartLite Pro EndoActivator™ 100 Barrier Sleeves
<b>644435</b>	SmartLite Pro EndoActivator™ 25 Tips Small (15/02) 22 mm
<b>644436</b>	SmartLite Pro EndoActivator™ 25 Tips Medium (25/04) 22 mm
<b>644437</b>	SmartLite Pro EndoActivator™ 25 Tips Medium Long (25/04) 28 mm
<b>644438</b>	SmartLite Pro EndoActivator™ Attachment

## Irrigation Needle Technical Specifications

- 60° angulation
- Clearly visible depth indications
- 4% taper to match the conical shape of the canal
- Back-to-back side vent design
- 30 gauge closed end tip
- 27 mm working length

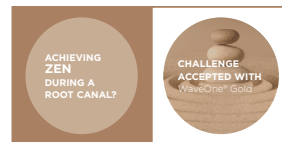
### Irrigation Needle 30 Gauge



<b>B NS DSIN D22 30G</b>	Box of 40 pieces
<b>B NS DSIN 522 30G</b>	Box of 5 pieces

## WHAT ARE YOUR ENDO GOALS?

All cleaning products support your preferred treatment solution.



**Irrigation Needle**  
**Produits Dentaires SA,**  
 Rue des Bosquets 18, CH-1800 Vevey

**SmartLite Pro EndoActivator™**  
**Dentsply Sirona,**  
 1301 Smile Way | York, PA 17404 USA  
 www.dentsplysirona.com

**CE** **MDP**

**PD Dental EU**  
 74200 Thonon-les-Bains, France

**DENTSPLY De Trey GmbH**  
 De-Trey-Straße 1, D-78467 Konstanz



Technical modifications on our products are not subject to notifications. Photos of our instruments are not contractual. ©2022 Dentsply Sirona, Inc. Rx Only



CLOSE X